

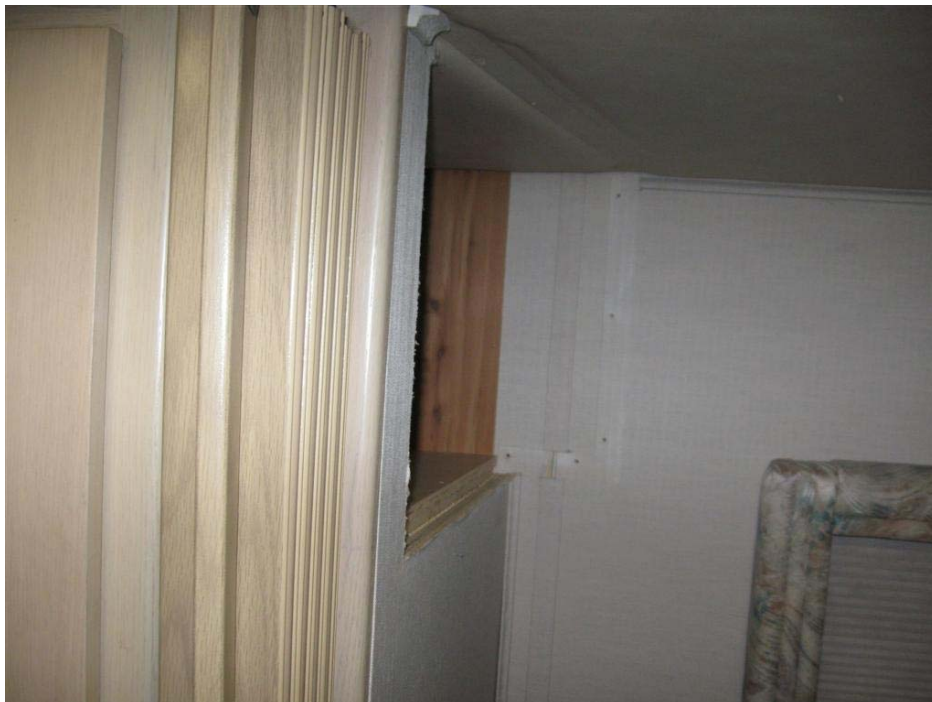
Bedroom TV replacement

On our last trip, the TV in the bedroom started to give trouble. It was a 13 inch Panasonic TV and in general worked well since purchase of the Barth. Now however, it would come on, flicker and until I slapped the face really good it wouldn't show a picture. With the coming February 17 Digital TV changeover, I decided to replace the TV with a LCD model.

Original TV:



TV removed:



I removed the old TV surround and modified it to accept a New LCD 19" TV. I debated whether I should go up to a 22" TV as it would fit height wise but I would have to alter the width more then I thought would look good. I cut some oak angle strips that the TV could but up against and then fabricated a shelf for the lower part of the TV to sit on. I tried to get the angle of the TV to match the viewing angle while laying in bed. 10-12 degrees was about right. After the wood surround was modified I had a space about 2 inches high where I could put a DVD player.

LCD TV installed:



Rear View:



I found a very inexpensive up converting DVD player, that would be thin enough to fit under the TV in the space provided BUT, only when I got it home did I find that the player was 17" wide and the space I had allowed was 16 3/4" wide! So I pulled the TV back out and the wood surround out again. I was able to enlarge the width to the required 17" and reinstalled the assembly. The DVD player fit perfectly. Tied all the cables up and finished the project.

LCD TV with DVD player:



Rear view:



The printer is a WiFi printer that is used for the various printing functions of our mobile computing system. We have Sprint EVDO service, the Sprint card is in a router that creates a WiFi hot spot.

After finishing and evaluating the TV installation, I might have been better off to install a 22" TV, even though the height of the 19" LCD TV is virtually the same as the previous 13" tube type TV, unless the DVD is properly formatted for 16:9 or 16:10, the height is very small. Sure it was the same or smaller for the 13" but--. Of course, if I had installed the 22" LCD TV, I would not have had the room for the DVD player under the TV, which I like a lot. Digital HD RF reception seems to be OK as long as the station is sending the wide format.

The choice of the TV was made at Costco. I compared side by side TV from Sharp, Samsung and Vizio. I opened the menu and made sure all TVs were in the default settings and it was very obvious, Vizio had a sharper, more vibrant picture. It turned out that the Vizio was on sale for \$199.99, \$50 less than Sharp and well over \$100 less than Samsung.

Using the outside antenna, I compared the Vizio reception to the converter boxes reception for the front TV (which is still the old Tube type—will get to that later!). The Vizio's tuner is exceptional! Most digital channels were very clear and even with the antenna down close to the roof, I can still get at least 20 channels of local digital reception. With the converter box, I can only get about 6 digital channels.

The power draw for the TV and the DVD converter is about 1/2 of the previous 13 inch TV only.

We will start traveling again at the end of January (to Quartzite AZ) and will have a better idea of how it works. After the TV digital changeover, it will be interesting to see how it works in the boon docks. We do have Direct TV capabilities but have not taken it along because the set-up is not ideal. We move a lot and until I have an automatic antenna, Direct TV stays at home.

Ed Raether
1-04-2009